

FOR PERMIT/BID

DRAWN BY: ECH
APPROVED: JFV
JOB DATE: 8/15/2018
JOB NUMBER: 180186
CAD DATE: 11/8/2018 1:59:45 PM
CAD FILE: J:\2018\180186\CAD\Drawings\180186_Details.dwg

BAR IS ONE INCH ON OFFICIAL DRAWINGS.
IF NOT ONE INCH, ADJUST SCALE ACCORDINGLY.

NO.	DATE	BY	REVISION DESCRIPTION
1	11/09/18	ECH	FOR PERMIT/BID
2	12/19/18	ECH	ADDENDUM #1

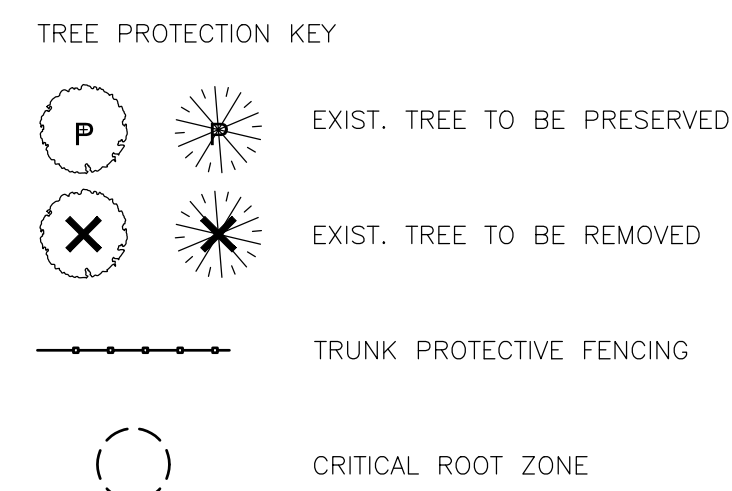
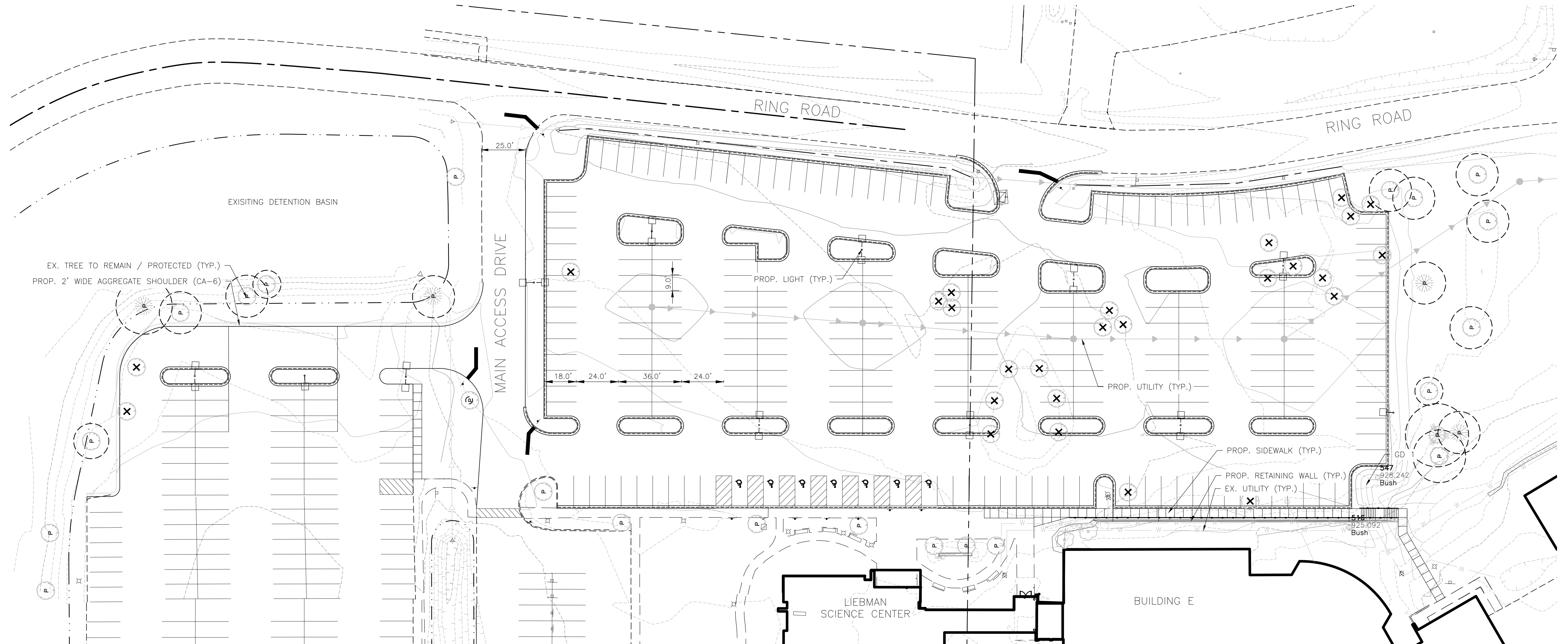
HRGreen
ILLINOIS DESIGN FIRM # 184.001322
420 N. FRONT STREET, SUITE 100
McHENRY, ILLINOIS 60050
PHONE: 815.385.1778 | TOLL FREE: 800.728.7805
FAX: 815.385.1781 | HRGreen.com

McHenry County College

McHENRY COUNTY COLLEGE
PARKING LOT E & F IMPROVEMENTS
CRYSTAL LAKE, ILLINOIS

CIVIL SITEWORK
STANDARD CONSTRUCTION DETAILS

SHEET NO.
C-11



- GENERAL NOTES
1. THE INTENT IS TO KEEP THE EXISTING TREES TO BE PRESERVED IN TACT THROUGHOUT THE DURATION OF CONSTRUCTION ON-SITE. IF THE TREES ARE DAMAGED DURING CONSTRUCTION, THE CONTRACTOR IS RESPONSIBLE FOR REPLACING PER THE MUNICIPALITY'S ORDINANCE.
 2. CONTRACTOR IS RESPONSIBLE FOR THE HAUL-OFF OF ALL TREES TO BE REMOVED.

1 TREE PRESERVATION PLAN
SCALE: 1" = 30'-0"

Dial 811 or 1-800-892-0123

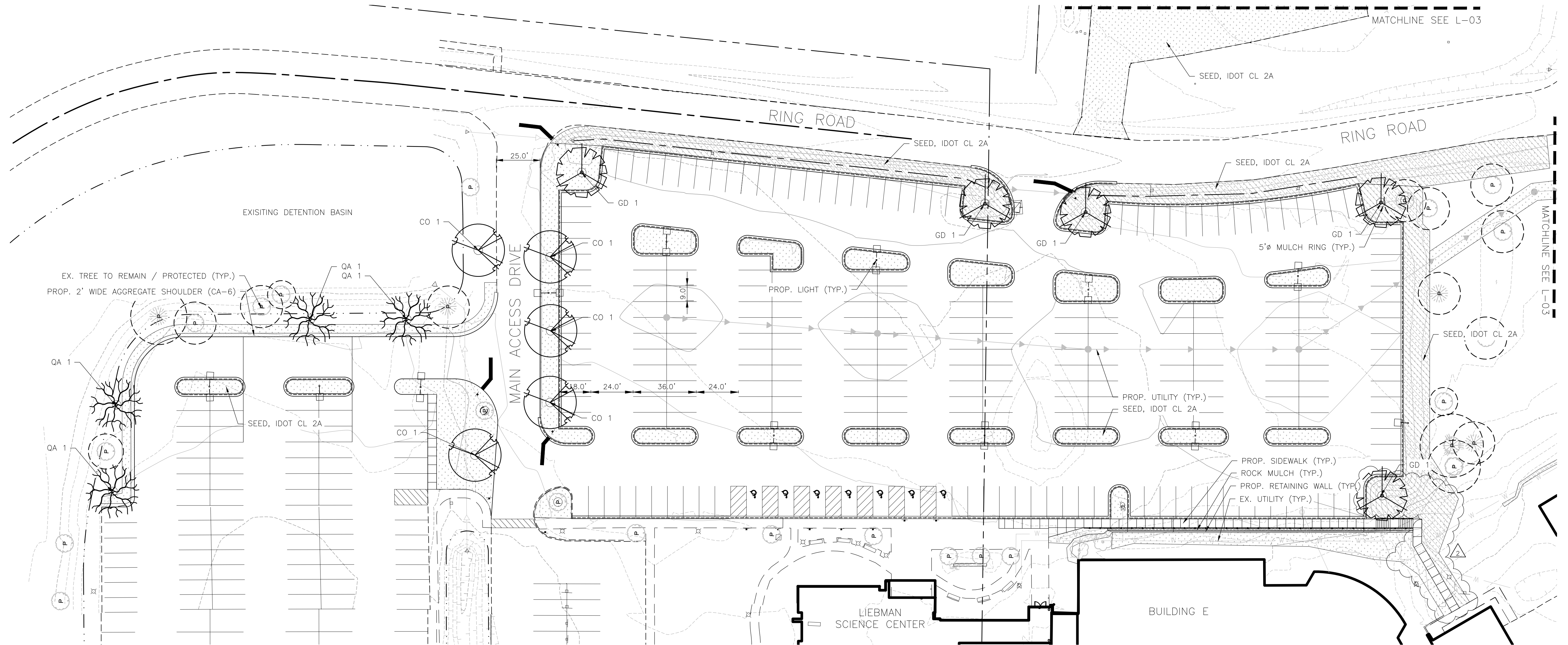
Know what's below.
Call before you dig.

CALL JULIE 1-800-892-0123

WITH THE FOLLOWING:
COUNTY McHenry
CITY-TOWNSHIP Crystal Lake - Dorr
SEC. & 1/4 SEC. NO.# SW 1/4 OF SEC-26-T-44N-7E

48 hours before you dig
(Excluding Sat., Sun. & Holidays)

FOR PERMIT/BID



MCHENRY COUNTY COLLEGE PARKING LOT E & F IMPROVEMENTS, CRYSTAL LAKE, ILLINOIS						
December 19, 2018						
MATERIALS SCHEDULE						
QTY	KEY	BOTANICAL NAME/ITEM	COMMON NAME	SIZE	COND	REMARKS
DECIDUOUS TREES						
5	CO	CELTIS OCCIDENTALIS	HACKBERRY	2.5" CAL.	B&B	CENTRAL LEADER; MATCHED
5	GD	GYMNOCLADUS DIOICA	KENTUCKY COFFEE TREE	2.5" CAL.	B&B	CENTRAL LEADER; MATCHED
4	CO	QUERCUS ALBA	WHITE OAK	2.5" CAL.	B&B	CENTRAL LEADER; MATCHED
MISCELLANEOUS						
3	MULCH	3" DEEP SHREDDED HARDWOOD MULCH		CY		
2	ROCK	3" DEEP 1-3" DIAMETER RIVER ROCK MULCH		CY		
5968	SEED	IDOT CLASS 2A, SALT TOLERANT ROADSIDE MIXTURE / HYDROMULCH		SY		
1492	ECB	DS75 EROSION CONTROL BLANKET MANUFACTURED BY NORTH AMERICAN GREEN OR APPROVED EQUAL		SY		
GENERAL NOTES:						
1. ALL IDOT CL 2A SEED SHALL BE INSTALLED PER IDOT STANDARD SPECIFICATIONS FOR ROAD AND BRIDGE CONSTRUCTION (MOST RECENT VERSION).						

GROUNDCOVER LEGEND

	SEED, IDOT CL 2A HYDROSEED
	SEED, IDOT CL 2A HYDROSEED / ECB DS75
	ROCK MULCH

- NOTE:
- ALL SEED SHALL BE HYDROSEED AS SHOWN ON PLANS AND AS SPECIFIED.
 - FURNISH AND PLACE 4" TOPSOIL AT SEEDING LOCATIONS

ORDINANCE LANDSCAPE REQUIREMENTS

TREE PRESERVATION
PER THE ORDINANCE, MCHENRY COUNTY COLLEGE IS EXEMPT FROM THE TREE PRESERVATION REQUIREMENTS

PARKING LOT INTERIOR LANDSCAPING (PARKING LOTS DESIGNED FOR MORE THAN 200 SPACES)
N/A PER CITY

PARKING LOT PERIMETER LANDSCAPING NOT ABUTTING RIGHTS-OF-WAY (PARKING LOTS DESIGNED FOR MORE THAN 200 SPACES)
N/A PER CITY

1 LANDSCAPE PLAN

SCALE: 1" = 30'-0"

Dial 811 or 1-800-892-0123

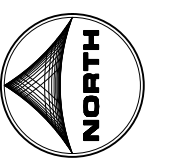


Know what's below.
Call before you dig.

CALL JULIE 1-800-892-0123

WITH THE FOLLOWING:
COUNTY McHenry
CITY-TOWNSHIP Crystal Lake - Dorr
SEC. & 1/4 SEC. NO.# SW 1/4 OF SEC-25-T-44N-7E

48 hours before you dig
(Excluding Sat., Sun. & Holidays)



FOR PERMIT/BID

DRAWN BY: NRS
APPROVED: JFV
JOB DATE: 8/15/2018
JOB NUMBER: 180186
CAD DATE: 12/19/2018 11:14:22 AM
CAD FILE: J:\2018\180186\CAD\Drawings\L\180186_L-sheets.dwg

BAR IS ONE INCH ON
OFFICIAL DRAWINGS.
0' 1" IF NOT ONE INCH,
ADJUST SCALE ACCORDINGLY.

NO.	DATE	BY	REVISION DESCRIPTION
1	11/09/18	ECH	FOR PERMIT/BID
2	12/19/18	ECH	ADDENDUM #1



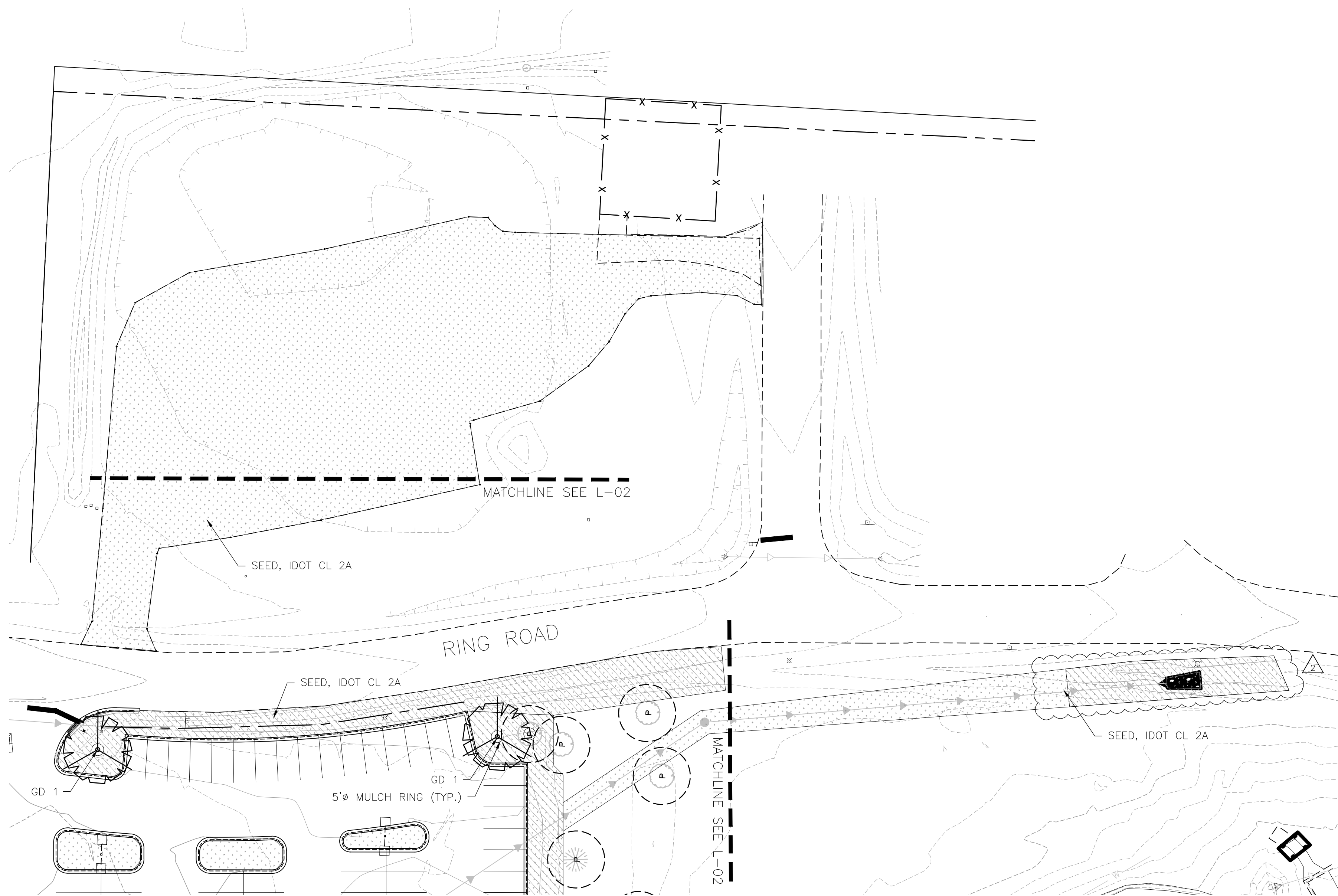
ILLINOIS DESIGN FIRM # 184-001322
420 N. FRONT STREET, SUITE 100
MCHENRY, ILLINOIS 60050
PHONE: 815.385.1778 | TOLL FREE: 800.728.7805
FAX: 815.385.1781 | HRGreen.com



MCHENRY COUNTY COLLEGE
PARKING LOT E & F IMPROVEMENTS
CRYSTAL LAKE, ILLINOIS

LANDSCAPE
LANDSCAPE PLAN

SHEET NO.
L-02



GROUNDCOVER LEGEND	
	SEED, IDOT CL 2A HYDROSEED
	SEED, IDOT CL 2A HYDROSEED / ECB DS75
	ROCK MULCH

- NOTE:
- ALL SEED SHALL BE HYDROSEED AS SHOWN ON PLANS AND AS SPECIFIED.
 - FURNISH AND PLACE 4" TOPSOIL AT SEEDING LOCATIONS

1 LANDSCAPE PLAN

SCALE: 1" = 30'-0"

Dial 811 or 1-800-892-0123

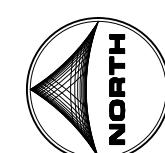


Know what's below.
Call before you dig.

CALL JULIE 1-800-892-0123

WITH THE FOLLOWING:
COUNTY McHenry
CITY-TOWNSHIP Crystal Lake - Dorr
SEC. & 1/4 SEC. NO.# SW 1/4 OF SEC-26-T-44N-7E

48 hours before you dig
(Excluding Sat., Sun. & Holidays)



FOR PERMIT/BID

DRAWN BY: NRS	JOB DATE: 8/15/2018	BAR IS ONE INCH ON OFFICIAL DRAWINGS, 0" = 1"
APPROVED: JFV	JOB NUMBER: 180186	IF NOT ONE INCH, ADJUST SCALE ACCORDINGLY.
CAD DATE: 12/19/2018 11:14:22 AM		
CAD FILE: J:\2018\180186\CAD\Dwgs\L\180186_L-sheets.dwg		

NO.	DATE	BY	REVISION DESCRIPTION
1	11/09/18	ECH	FOR PERMIT/BID
2	12/19/18	ECH	ADDENDUM #1



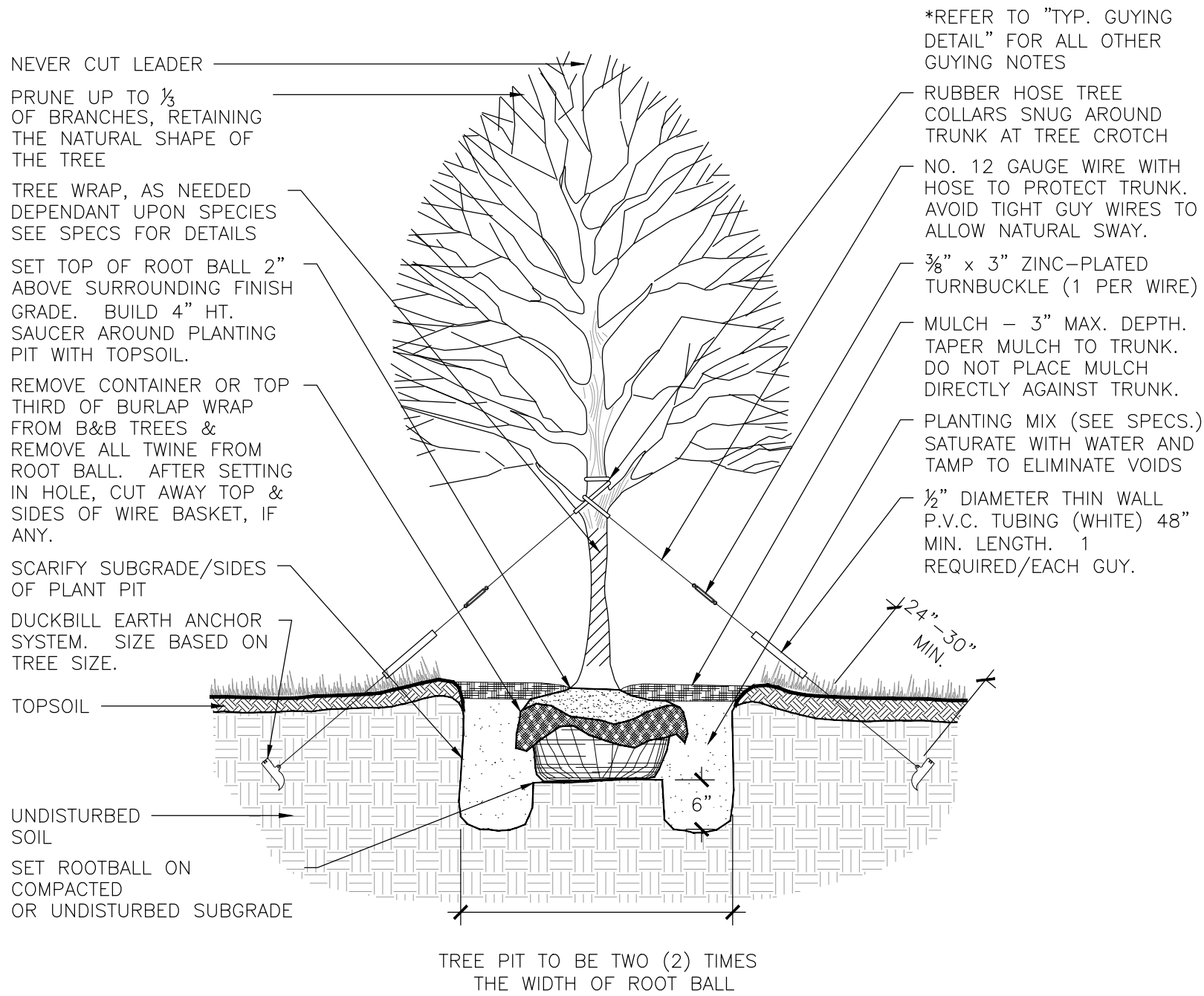
ILLINOIS DESIGN FIRM # 184.001322
420 N. FRONT STREET, SUITE 100
McHENRY, ILLINOIS 60050
PHONE: 815.385.1778 | TOLL FREE: 800.728.7805
FAX: 815.385.1781 | HRGreen.com



McHENRY COUNTY COLLEGE
PARKING LOT E & F IMPROVEMENTS
CRYSTAL LAKE, ILLINOIS

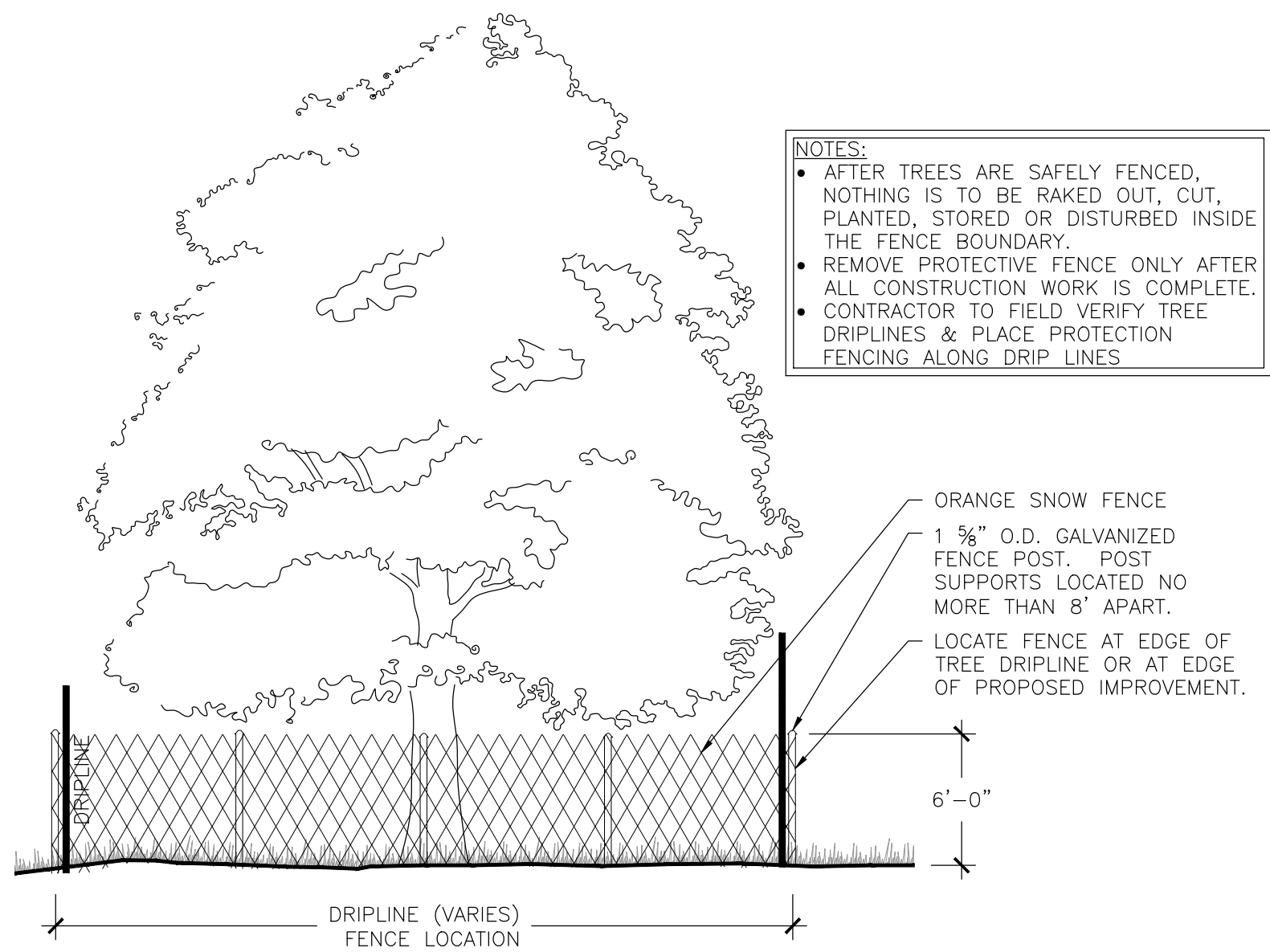
LANDSCAPE
LANDSCAPE PLAN

SHEET NO.
L-03



1 TYP. DECIDUOUS TREE PLANTING DETAIL

SCALE: NTS



3 TYP. TREE PROTECTION SNOW FENCE DETAIL

SCALE: NTS

Dial 811 or 1-800-892-0123



Know what's below.
Call before you dig.

CALL JULIE 1-800-892-0123

WITH THE FOLLOWING:

COUNTY **McHenry**

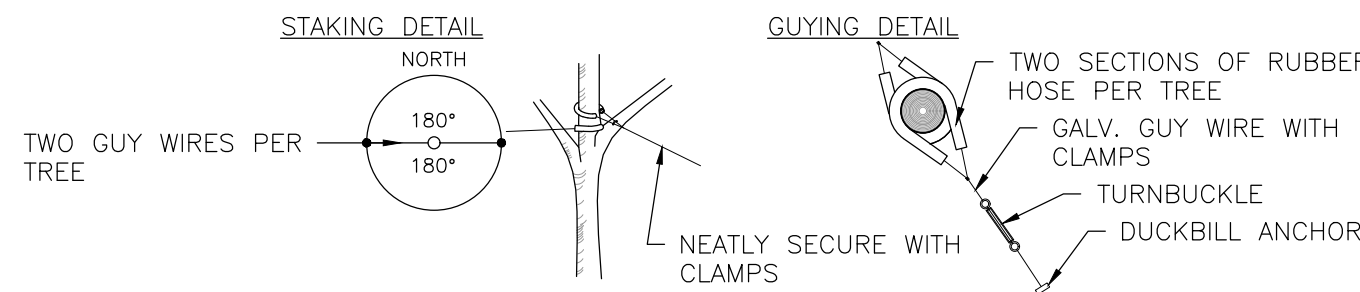
CITY-TOWNSHIP **Crystal Lake - Dorr**

SEC. & 1/4 SEC. NO.# **SW 1/4 OF SEC-25-T-44N-7E**

48 hours before you dig
(Excluding Sat., Sun. & Holidays)

GUYING STANDARDS

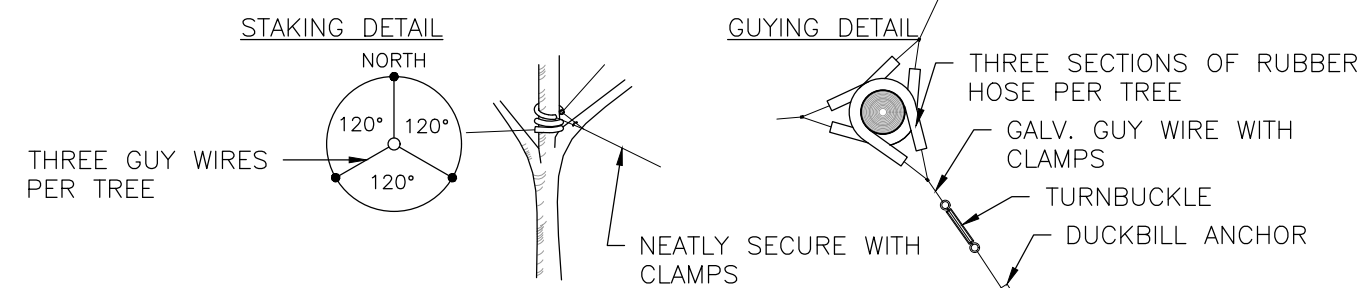
- TWO (2) MODEL 68 DUCKBILL ANCHORS (HOLDING CAPACITY 1100# PER ANCHOR IN NORMAL SOIL.
- 13' OF 1/2" 7x7 GALVANIZED STEEL CABLE WITH TURNBUCKLE ATTACHED MID-CABLE.
- 1/2" DIAMETER THIN WALL P.V.C. TUBING (WHITE) 48" MINIMUM LENGTH. ONE (1) REQUIRED/EACH GUY.
- TWO (2) TURNBUCKLES, EYE AND EYE TYPE, 3/8" THREAD DIAMETER WITH 3" TAKE-UP
- FOUR (4) 1/8" CABLE CLAMPS, ZINC PLATED (DR-2 STEEL DRIVE ROD 2' LONG WITH 1/4" ROUND DRIVING TIP NEEDED TO INSTALL ANCHORS. ONE ROD, NOT INCLUDED IN KIT, DRIVES HUNDREDS OF ANCHORS)
- TWO (2) RUBBER HOSE TREE COLLARS, 21" LONG, EA.



*APPLIES TO SINGLE TRUNK DECIDUOUS TREES 3" CAL. AND LESS & EVERGREEN TREES 8' HT. AND LESS

GUYING STANDARDS

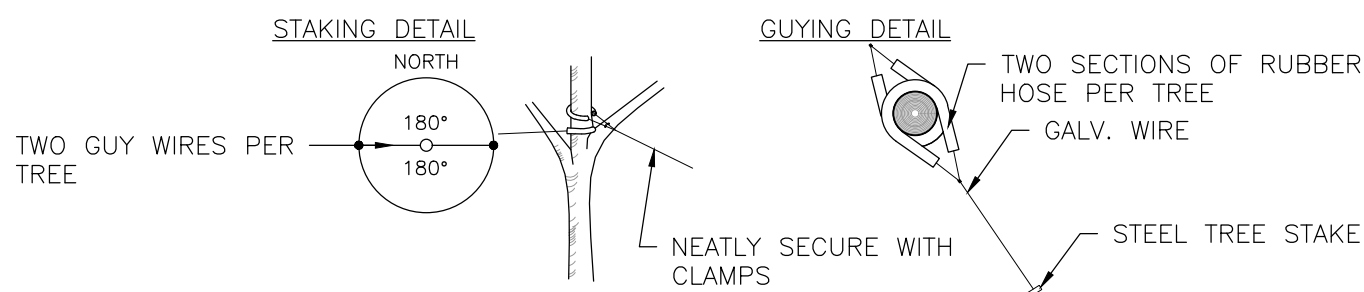
- THREE (3) MODEL 68 DUCKBILL ANCHORS (HOLDING CAPACITY 1100# PER ANCHOR IN NORMAL SOIL.
- 13' OF 1/2" 7x7 GALVANIZED STEEL CABLE WITH TURNBUCKLE ATTACHED MID-CABLE.
- 1/2" DIAMETER THIN WALL P.V.C. TUBING (WHITE) 48" MINIMUM LENGTH. ONE (1) REQUIRED/EACH GUY.
- THREE (3) TURNBUCKLES, EYE AND EYE TYPE, 3/8" THREAD DIAMETER WITH 3" TAKE-UP
- SIX (6) 1/8" CABLE CLAMPS, ZINC PLATED (DR-2 STEEL DRIVE ROD 2' LONG WITH 1/4" ROUND DRIVING TIP NEEDED TO INSTALL ANCHORS. ONE ROD, NOT INCLUDED IN KIT, DRIVES HUNDREDS OF ANCHORS)
- THREE (3) RUBBER HOSE TREE COLLARS, 21" LONG, EA.



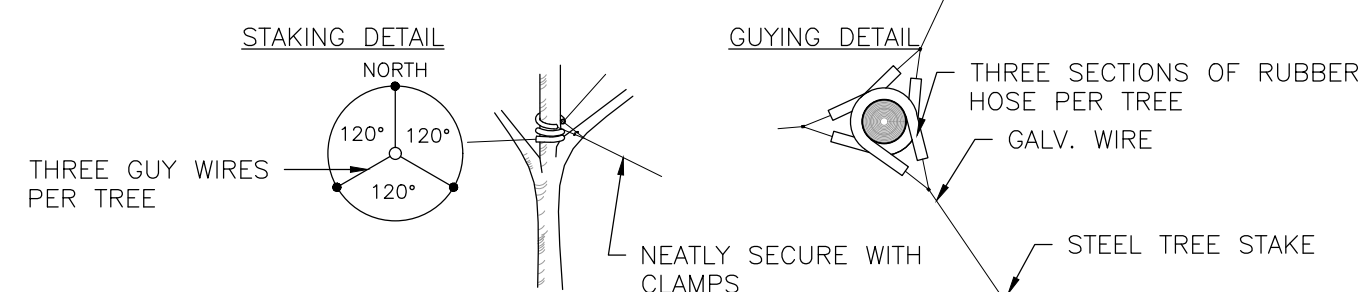
*APPLIES TO SINGLE TRUNK DECIDUOUS TREES GREATER THAN 3" CAL. & EVERGREEN TREES GREATER THAN 8' HT.

2 TYP. GUYING DETAIL

SCALE: NTS



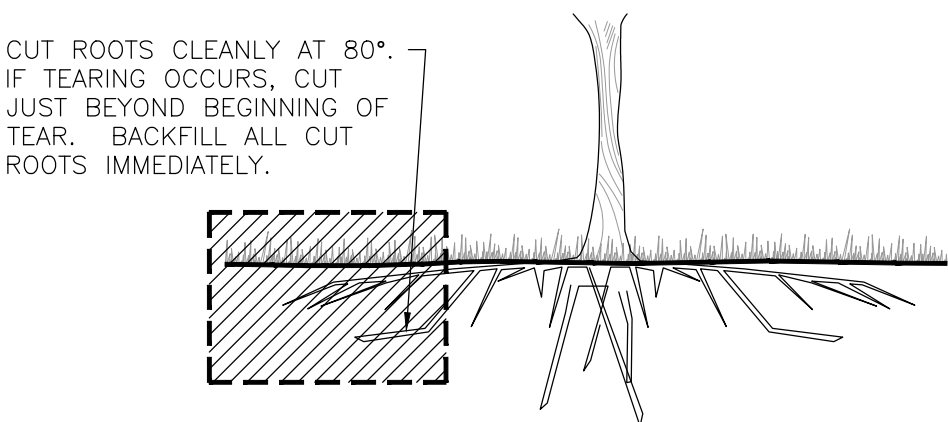
*APPLIES TO SINGLE TRUNK DECIDUOUS TREES 3" CAL. AND LESS & EVERGREEN TREES 8' HT. AND LESS & ALL MULTI-STEM TREES



*APPLIES TO SINGLE TRUNK DECIDUOUS TREES GREATER THAN 3" CAL. & EVERGREEN TREES GREATER THAN 8' HT.

4 TYP. STAKING DETAIL

SCALE: NTS



5 TYP. ROOT PRUNING DETAIL

SCALE: NTS

GENERAL NOTES

- BASE MAP INFORMATION IS ACCURATE AS OF THE DATE PRINTED ON THIS PACKAGE.
- THE LANDSCAPE PLANS CONTAINED HEREIN ILLUSTRATE APPROXIMATE LOCATIONS OF ALL SITE CONDITIONS. REFER TO SURVEY, ARCHITECTURAL, CIVIL ENGINEERING, STRUCTURAL, ELECTRICAL, IRRIGATION AND ALL OTHER DRAWINGS, IF AVAILABLE, FOR ADDITIONAL DETAILED INFORMATION.
- THE CONTRACTOR SHALL BE RESPONSIBLE FOR BECOMING AWARE OF AND FIELD VERIFYING ALL RELATED EXISTING AND PROPOSED CONDITIONS, UTILITIES, PIPES AND STRUCTURES, ETC. PRIOR TO BIDDING AND CONSTRUCTION. THE CONTRACTOR SHALL BE HELD RESPONSIBLE FOR CONTACTING JULIE, THE MUNICIPAL PUBLIC WORKS DEPARTMENT, THE COUNTY AND ANY OTHER PUBLIC OR PRIVATE AGENCIES NECESSARY FOR UTILITY LOCATION PRIOR TO ANY CONSTRUCTION. THE CONTRACTOR SHALL NOTIFY THE OWNER'S REPRESENTATIVE OF APPARENT CONFLICTS WITH CONSTRUCTION AND UTILITIES SO THAT ADJUSTMENTS CAN BE PLANNED PRIOR TO INSTALLATION. IF FIELD ADJUSTMENTS ARE NECESSARY DUE TO EXISTING UTILITY LOCATIONS THEY MUST BE APPROVED BY THE OWNER'S REPRESENTATIVE. THE CONTRACTOR SHALL TAKE SOLE RESPONSIBILITY FOR ANY AND ALL COSTS OR OTHER LIABILITIES INCURRED DUE TO DAMAGE OF SAID UTILITIES/STRUCTURES/ETC.
- THE CONTRACTOR SHALL VERIFY ALL SITE CONDITIONS. THE CONTRACTOR SHALL NOT WILLFULLY PROCEED WITH CONSTRUCTION AS DESIGNED WHEN IT IS APPARENT THAT UNKNOWN OBSTRUCTIONS AND/OR GRADE DIFFERENCES EXIST THAT MAY NOT HAVE BEEN KNOWN DURING DESIGN. SUCH CONDITIONS SHALL BE IMMEDIATELY BROUGHT TO THE ATTENTION OF THE OWNER'S REPRESENTATIVE FOR CLARIFICATION. THE CONTRACTOR SHALL ASSUME FULL RESPONSIBILITY FOR ALL LIABILITIES, INCLUDING NECESSARY REVISIONS DUE TO FAILURE TO GIVE SUCH NOTIFICATION.
- THE CONTRACTOR SHALL APPLY FOR AND PROCURE ALL REQUIRED PERMITS PRIOR TO COMMENCING WORK.
- THE CONTRACTOR SHALL COMPLY WITH ALL CODES APPLICABLE TO THIS WORK.
- THE CONTRACTOR SHALL BE RESPONSIBLE FOR COORDINATION WITH SUBCONTRACTORS AND OTHER CONTRACTORS OF RELATED TRADES, AS REQUIRED, TO ACCOMPLISH THE PLANTING AND RELATED OPERATIONS.
- THE CONTRACTOR SHALL COORDINATE INSTALLATION OF ALL PLANT MATERIAL WITH THE INSTALLATION OF OTHER IMPROVEMENTS SUCH AS HARDSCAPE ELEMENTS AND RELATED STRUCTURES. ANY DAMAGE TO EXISTING IMPROVEMENTS IS THE RESPONSIBILITY OF THE CONTRACTOR.
- THE CONTRACTOR IS RESPONSIBLE TO RESTORE ALL AREAS OF THE SITE, OR ADJACENT AREAS, WHERE DISTURBED BY OPERATIONS OF OR RELATED TO THE CONTRACTOR'S WORK.
- ALL SURFACE DRAINAGE SHALL BE DIVERTED AWAY FROM STRUCTURES AND NOTED SITE FEATURES IN ALL AREAS AT A MINIMUM OF 2% SLOPE AS SHOWN ON THE CIVIL ENGINEERING PLANS. ALL AREAS SHALL POSITIVELY DRAIN AND ALL ISLANDS SHALL BE CROWNED 1" IN HEIGHT PER 1' IN ISLAND WIDTH.
- THE CONTRACTOR SHALL STAKE ALL IMPROVEMENTS AS NOTED ON THE FOLLOWING PLANS, AS WELL AS, TREE LOCATIONS AND THE PERIMETER OF SHRUB/PERENNIAL BEDS PRIOR TO INSTALLATION AND CONTACT THE OWNER'S REPRESENTATIVE FOR APPROVAL. FINAL LOCATION AND STAKING OF ALL IMPROVEMENTS SHALL BE ACCEPTED BY THE OWNER'S REPRESENTATIVE IN ADVANCE OF INSTALLATION.
- IF CONFLICTS ARISE BETWEEN THE SIZE OF AREAS AND PLANS, THE CONTRACTOR IS REQUIRED TO CONTACT THE OWNER'S REPRESENTATIVE FOR RESOLUTION PRIOR TO INSTALLATION.
- WHERE PROVIDED, AREA TAKEOFFS AND PLANT QUANTITY ESTIMATES IN THE PLANT LIST ARE FOR INFORMATION ONLY. THE CONTRACTOR IS RESPONSIBLE TO DO THEIR OWN QUANTITY TAKE-OFFS FOR ALL PLANT MATERIALS AND SIZES SHOWN ON PLANS. IN CASE OF ANY DISCREPANCIES, PLANS TAKE PRECEDENCE OVER CALL-OUTS AND/OR THE PLANT LIST(S).
- ALL PLANTS SHALL BE NURSERY GROWN PLANTS MEETING AMERICAN NURSERY AND LANDSCAPE ASSOCIATION (ANLA) STANDARDS SET FORTH IN THE "AMERICAN STANDARD FOR NURSERY STOCK" (ANSI Z60.1-LATEST EDITION). PLANTS ARE TO BE TYPICAL IN SHAPE AND SIZE FOR SPECIES. PLANTS PLANTED IN ROWS OR GROUPS SHALL BE MATCHED IN FORM. PLANT MATERIAL OF THE SAME SPECIES SHALL BE OBTAINED FROM THE SAME SOURCE. PLANTS SHALL NOT BE ROOT-BOUND OR LOOSE IN THEIR CONTAINERS. HANDLE ALL PLANTS WITH CARE IN TRANSPORTING, PLANTING AND MAINTENANCE UNTIL INSPECTION AND FINAL ACCEPTANCE. FIELD COLLECTED, PARK GRADE, OR BARE ROOT MATERIAL SHALL NOT BE USED UNLESS APPROVED BY THE OWNER'S REPRESENTATIVE.
- ALL PLANTING BED EDGES TO BE SHOVEL CUT.
- CONTRACTOR SHALL USE CAUTION WHEN DIGGING TREE PITS IN THE VICINITY OF UNDERGROUND UTILITY LINES AND MAY NEED TO HAND DIG THE PITS IN MANY OF THESE INSTANCES.
- ALL AREAS DESIGNED TO RECEIVE SOLID SOD SHALL BE APPROVED BY LANDSCAPE ARCHITECT PRIOR TO GRASSING OPERATIONS. FINISH GRADE AT TURF AREAS SHALL BE 3/4"-1" BELOW TOP OF ADJACENT PAVEMENT OR CURBS.
- CONTRACTOR SHALL FIELD ADJUST PLANT LOCATIONS TO ACCOMMODATE ALL LIGHTING AND ENSURE PLANTS WILL NOT INTERFERE WITH LIGHTING.
- FERTILIZING, AS SPECIFIED, STAKING, WATERING AND ONE (1) YEAR PLANT WARRANTY FOR INSTALLED PLANT MATERIAL, SHALL BE CONSIDERED INCIDENTAL TO THE PLANT ITEMS.
- MUSHROOM COMPOST SHALL BE FINELY SCREENED, HOMOGENOUS, DECOMPOSED ORGANIC MATERIAL SUITABLE FOR HORTICULTURAL USE AS AVAILABLE FROM MIDWEST TRADING HORTICULTURAL SUPPLIES, INC. ST. CHARLES, IL 60174 (630) 365-1990 OR APPROVED EQUAL. MIX THOROUGHLY IN PLANT BED BEFORE INSTALLING PLANTS.
- WARRANTY: ONE (1) YEAR REPLACEMENT WARRANTY FOR ALL PLANT MATERIALS SHALL BE CONSIDERED INCIDENTAL TO THIS PROJECT. WARRANTY SHALL COVER PLANTS WHICH HAVE DIED OR PARTIALLY DIED (THEREBY RUINING THEIR NATURAL SHAPE), BUT SHALL NOT INCLUDE DAMAGE BY VANDALISM, BROWSING, HAIL, ABNORMAL FREEZES, DROUGHT OR NEGLIGENCE BY THE OWNER. THE WARRANTY IS INTENDED TO COVER CONTRACTOR NEGLIGENCE, INFESTATIONS, DISEASE AND DAMAGE OR SHOCK TO PLANTS. THE CONTRACTOR SHALL BE RESPONSIBLE FOR MAINTAINING AND WATERING THE PLANT MATERIAL AS NECESSARY, TO ENSURE GROWTH AND ESTABLISHMENT DURING THE 1-YEAR WARRANTY PERIOD. ANY PLANTS THAT ARE NOT IN A LIVE, HEALTHY, GROWING CONDITION AT THE END OF THE 1-YEAR WARRANTY PERIOD SHALL BE REPLACED BY THE CONTRACTOR AT THE CONTRACTOR'S EXPENSE. PLANTS REPLACED UNDER WARRANTY WILL BE WARRANTED FOR ONE (1) YEAR FOLLOWING REPLACEMENT.

GENERAL NOTES - SPECIAL REQUIREMENTS- WARRANTY AND MAINTENANCE OF SODDED AND SEEDED AREAS

- MOWING, TRIMMING AND REMOVAL OF GRASS CLIPPINGS IN TURF AREAS, DURING INITIAL 60 DAYS, SHALL BE THE RESPONSIBILITY OF THE CONTRACTOR. DURING THIS TIME, CONTRACTOR SHALL MOW TURF AREAS AT REGULAR INTERVALS TO MAINTAIN AT A MAXIMUM HEIGHT OF 2-1/2 INCHES. DO NOT CUT MORE THAN 1/3 OF GRASS BLADE AT ANY ONE MOWING. CONTRACTOR SHALL ALSO NEATLY TRIM EDGES WHERE NECESSARY AND REMOVE CLIPPINGS AFTER MOWING AND TRIMMING.
- WARRANTY:
 - A WARRANTY OF SEEDED AND SODDED AREAS SHALL BE CONSIDERED INCIDENTAL TO THE BID ITEM.
 - B. THE WARRANTY IS TO GUARANTEE COMPLETED SEED/SOD AREAS FOR A PERIOD OF 2 YEAR AFTER INITIAL ACCEPTANCE HAS BEEN DOCUMENTED.
 - C. REPLACEMENT COSTS ARE THE CONTRACTOR'S RESPONSIBILITY, EXCEPT FOR THOSE RESULTING FROM LOSS OR DAMAGE DUE TO VANDALISM, CIVIL DISOBEDIENCE, ACTS OF NEGLIGENCE ON THE PART OF OTHERS, PHYSICAL DAMAGE BY ANIMALS, VEHICLES, FIRE, OR LOSSES DUE TO CURTAILMENT OF WATER BY LOCAL AUTHORITY, OR BY "ACTS OF GOD."
- MAINTENANCE:
 - A. CONTRACTOR SHALL COORDINATE MAINTENANCE OPERATIONS AND ACTIVITIES WITH THE OWNER DURING THE WARRANTY PERIOD.
 - B. MAINTENANCE OF SEED/SOD AREAS SHALL BE PERFORMED BY TRAINED PERSONNEL SKILLED IN IDENTIFYING DESIRED AND UNDESIRED PLANT MATERIAL.
 - C. CONTRACTOR WILL BE RESPONSIBLE FOR MAINTENANCE OF SEEDED AND SOD AREAS DURING THE 1 YEAR WARRANTY PERIOD WITH THE EXCEPTION OF ROUTINE MOWING OF TURF AREAS. ROUTINE MOWING OF TURF AREAS, DURING THE 1 YEAR WARRANTY PERIOD, WILL BE THE RESPONSIBILITY OF THE OWNER ONCE INITIAL ACCEPTANCE HAS BEEN DOCUMENTED.
 - D. MAINTENANCE OF SEEDED AND SOD AREAS SHALL INCLUDE:
 - WATERING TO PREVENT GRASS AND SOIL FROM DRYING OUT.
 - ROLLING THE SURFACE TO REMOVE MINOR DEPRESSIONS OR IRREGULARITIES.
 - CONTROLLING GROWTH OF WEEDS. APPLY HERBICIDES IN ACCORDANCE WITH MANUFACTURER'S INSTRUCTIONS. REMEDY DAMAGE RESULTING FROM IMPROPER USE OF HERBICIDES.
 - PROTECTING SEEDED/SOD AREAS WITH WARNING SIGNS DURING MAINTENANCE AND WARRANTY PERIOD AS DEEMED NECESSARY.
 - IN THE SPRING OF EACH YEAR DURING THE 1 YEAR WARRANTY PERIOD, THE CONTRACTOR SHALL CORRECT AND RESEED AS ORIGINALLY SPECIFIED, ANY DEFECTS IN THE SEEDED/SOD AREAS AND GRASS STAND, SUCH AS WEEDY AREAS, ERODED AREAS, AND BARE SPOTS, UNTIL AFFECTED AREAS ARE ACCEPTABLE TO THE OWNER'S REPRESENTATIVE.
 - IN THE SPRING DURING THE 1 YEAR WARRANTY PERIOD, THE CONTRACTOR SHALL REPLACE OR REPAIR TO ORIGINAL CONDITION, ALL DAMAGES TO PROPERTY RESULTING FROM THE SEEDING/SODDING OPERATION OR FROM THE REMEDYING OF DEFECTS, AT THE CONTRACTOR'S EXPENSE.

SPECIAL REQUIREMENTS - MAINTENANCE

- BEGIN MAINTENANCE IMMEDIATELY FOLLOWING INSTALLATION OF SOD AND CONTINUE FOR A PERIOD UNTIL SODDED AREAS ARE ESTABLISHED WITH SOD ROOTED IN PLACE. MAINTENANCE PERIOD SHALL BE A MINIMUM OF 14 DAYS.
- MAINTENANCE OF SODDED AREAS SHALL INCLUDE WATERING, WEEDING, MOWING TO A 2 - 2 1/2 INCH HEIGHT AFTER HEIGHT HAS EXCEEDED 3 INCHES AND PRIOR TO 4 INCHES, AND REPLACEMENT AND INSTALLATION OF SOD AS ORIGINALLY SPECIFIED FOR SODDED AREAS FAILING TO SURVIVE. CLIPPINGS FROM MOWING WHICH MAT ON THE GRASS, ARE TO BE REMOVED.

SPECIAL REQUIREMENTS - WARRANTY

- A WARRANTY IS REQUIRED TO GUARANTEE COMPLETED SODDING OPERATIONS PROVIDING A UNIFORMLY DENSE, LIVE, AND HEALTHY STAND OF GRASS, FREE OF WEEDS AND UNDESIRABLE GRASSES, DEBRIS, AND FREE OF ERODED AREAS, BARE SPOTS, DISEASES, AND INSECTS AT THE END OF ONE YEARS FOLLOWING THE MINIMUM MAINTENANCE PERIOD OR PROJECT ACCEPTANCE, WHICHEVER IS MORE RECENT.
- CONTRACTOR TO REPLACE AS ORIGINALLY SPECIFIED AREAS THAT HAVE FAILED TO SURVIVE, AS OFTEN AS REQUIRED, TO ESTABLISH THE SODDED LAWN AREA UNTIL ACCEPTED; AT NO ADDITIONAL COMPENSATION.
- REPAIR AND REPLACE TO ORIGINAL CONDITION ALL DAMAGES TO PROPERTY RESULTANT FROM THE SODDING OPERATION AND ALL DAMAGES AS A RESULT FROM THE REMEDYING OF THESE DEFECTS, WITHOUT ADDITIONAL COMPENSATION.

DRAWN BY: NRS JOB DATE: 8/15/2018 BAR IS ONE INCH ON OFFICIAL DRAWINGS.
APPROVED: JFV JOB NUMBER: 180186 0" 1"
CAD DATE: 12/19/2018 11:14:22 AM IF NOT ONE INCH, ADJUST SCALE ACCORDINGLY.
CAD FILE: J:\2018\180186\CAD\Dwgs\L\180186_L-sheets.dwg

NO.	DATE	BY	REVISION DESCRIPTION
1	11/09/18	ECH	FOR PERMIT/BID
2	12/19/18	ECH	ADDENDUM #1

ILLINOIS DESIGN FIRM # 184-001322
420 N. FRONT STREET, SUITE 100
MCHEHRY, ILLINOIS 60050
PHONE: 815.385.1778 | TOLL FREE: 800.728.7805
FAX: 815.385.1781 | HRGreen.com



McHENRY COUNTY COLLEGE
PARKING LOT E & F IMPROVEMENTS
CRYSTAL LAKE, ILLINOIS

LANDSCAPE
LANDSCAPE DETAILS & NOTES

SHEET NO.

L-04

ELECTRICAL SYMBOL LIST			
SYMBOL:	TAG:	SPEC SECTION:	DESCRIPTION:
	S#	26 51 00	POLE MOUNTED LUMINAIRE
	LC-#	26 28 31	LIGHTING CONTACTOR
	TC-#	26 09 33	TIME CLOCK
	HH-#	26 05 33	HANDHOLE

ELECTRICAL ABBREVIATION KEY	
ABBR:	DESCRIPTION:
AFF	ABOVE FINISHED FLOOR
C	CONDUIT
E.C.	ELECTRICAL CONTRACTOR
TYP	TYPICAL
UNO	UNLESS NOTED OTHERWISE

ELECTRICAL RENOVATION NOTES:

THESE NOTES APPLY TO ALL ELECTRICAL SHEETS AND TRADES, INCLUDING BUT NOT LIMITED TO, LIGHTING, POWER, AND SYSTEMS.

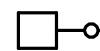
- NOT ALL EXISTING EQUIPMENT, LUMINAIRES, AND CONDUIT ARE SHOWN. EXISTING CONDITIONS ARE SHOWN BASED ON INFORMATION OBTAINED FROM FIELD SURVEYS, EXISTING BUILDING DOCUMENTS, AND STAFF. VERIFY EXISTING CONDITIONS AND REPORT ANY CONFLICTS BEFORE PROCEEDING.
- THE ELECTRICAL DRAWINGS INDICATE EXISTING ELECTRICAL ITEMS TO BE REMOVED. THE DRAWINGS ARE INTENDED TO INDICATE THE SCOPE OF WORK REQUIRED AND DO NOT INDICATE EVERY BOX, CONDUIT, OR WIRE THAT MUST BE REMOVED. THE CONTRACTOR SHALL VISIT THE SITE PRIOR TO SUBMITTING A BID AND VERIFY EXISTING CONDITIONS.
- ELECTRICAL ITEMS (i.e., LIGHTING FIXTURES ETC.) REMOVED AND NOT RELOCATED REMAIN THE PROPERTY OF THE OWNER. THE CONTRACTOR SHALL BE RESPONSIBLE FOR THE DISPOSAL OF MATERIAL THE OWNER DOES NOT WANT TO REUSE OR RETAIN (i.e., FOR MAINTENANCE PURPOSES).
- THE CONTRACTOR SHALL OBTAIN APPROVAL FROM THE OWNER BEFORE TURNING OFF POWER TO CIRCUITS, FEEDERS, PANELS, ETC. COORDINATE ALL OUTAGES WITH OWNER.

ELECTRICAL INSTALLATION NOTES:

- CONTRACTOR SHALL BE RESPONSIBLE FOR ALL OPENINGS REQUIRED IN WALLS. ALL OPENINGS SHALL BE REPAIRED TO MATCH EXISTING BY A QUALIFIED CONTRACTOR AT THE EXPENSE OF THIS CONTRACTOR. ALL CONDUITS THROUGH WALLS SHALL BE GROUTED OR SEALED INTO OPENINGS.
- ALL WELDING SHALL BE ACCORDING TO AMERICAN WELDING SOCIETY STANDARDS. CONTRACTOR SHALL FURNISH TO THE ARCHITECT/ENGINEER CERTIFICATES QUALIFYING EACH WELDER, PRIOR TO START OF WORK. THE ARCHITECT/ENGINEER RESERVES THE RIGHT TO REQUIRE QUALIFYING DEMONSTRATION, AT THE CONTRACTOR'S EXPENSE, OF ANY WELDERS ASSIGNED TO THE JOB.
- CONTRACTOR SHALL REMOVE AND REINSTALL ALL CEILING TILES AS REQUIRED FOR THE EXECUTION OF ELECTRICAL WORK. CONTRACTOR SHALL REPLACE CEILING TILES WITH IDENTICAL MATERIAL WHERE DAMAGED BY THIS CONTRACTOR.

ELECTRICAL GENERAL NOTES:

LUMINAIRE KEY:



S1 = FIXTURE TAG
1 = CIRCUIT NUMBER

LUMINAIRE

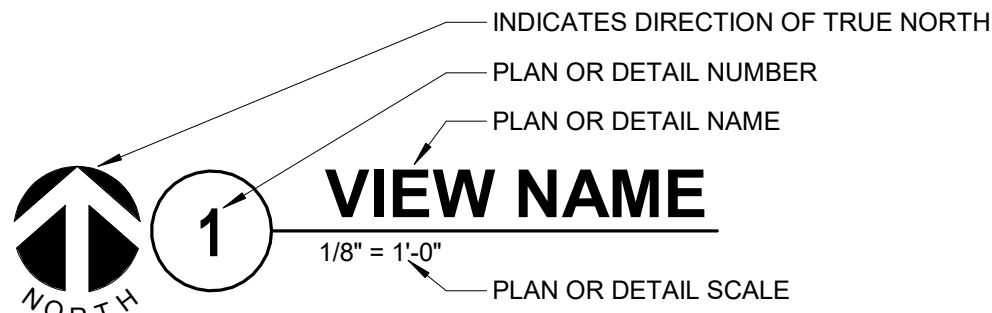
ELECTRICAL SHEET INDEX

E0	ELECTRICAL COVERSHEET
E1	SITE PLAN - ELECTRICAL DEMOLITION
E2	SITE PLAN - ELECTRICAL
E3	PARTIAL FIRST FLOOR PLAN - ELECTRICAL
E4	SITE PLAN - PHOTOMETRIC
E5	ELECTRICAL DETAILS AND SCHEDULES

VIEW KEY

	NAME	LEVEL NAME
	10' - 0"	HEIGHT ABOVE PROJECT 0' - 0"

INDICATES NOTE USED TO DESCRIBE ADDITIONAL INFORMATION ABOUT WORK REQUIRED, SPECIFIC TO THE SHEET AND/OR DETAIL



LINE TYPE KEY:

	NEW WORK BY THIS CONTRACTOR (DARK SOLID LINE)
	NEW WORK BY OTHERS AND/OR EXISTING TO REMAIN (LIGHT SOLID LINE)
	EXISTING TO BE REMOVED BY THIS CONTRACTOR (DARK SHORT DASHED LINE)

DRAWN BY:	TB	JOB DATE:	11/09/2018	BAR IS ONE INCH ON OFFICIAL DRAWINGS
APPROVED:	JML	JOB NO:	180186	0
CAD DATE:				IF NOT ONE INCH, ADJUST SCALE ACCORDINGLY
CAD FILE:				

NO.	DATE	BY	REVISION DESCRIPTION
1	11/09/18	TB	FOR PERMIT / BID



ILLINOIS DESIGN FIRM # 184.001322
420 N. FRONT STREET, SUITE 100
McHENRY, ILLINOIS 60050
PHONE: 815.385.1778 | TOLL FREE: 800.728.7805
FAX: 815.385.1781 | HRGreen.com



McHENRY COUNTY COLLEGE
PARKING LOT E & F IMPROVEMENTS
CRYSTAL LAKE, ILLINOIS

ELECTRICAL COVERSHEET

SHEET NO.

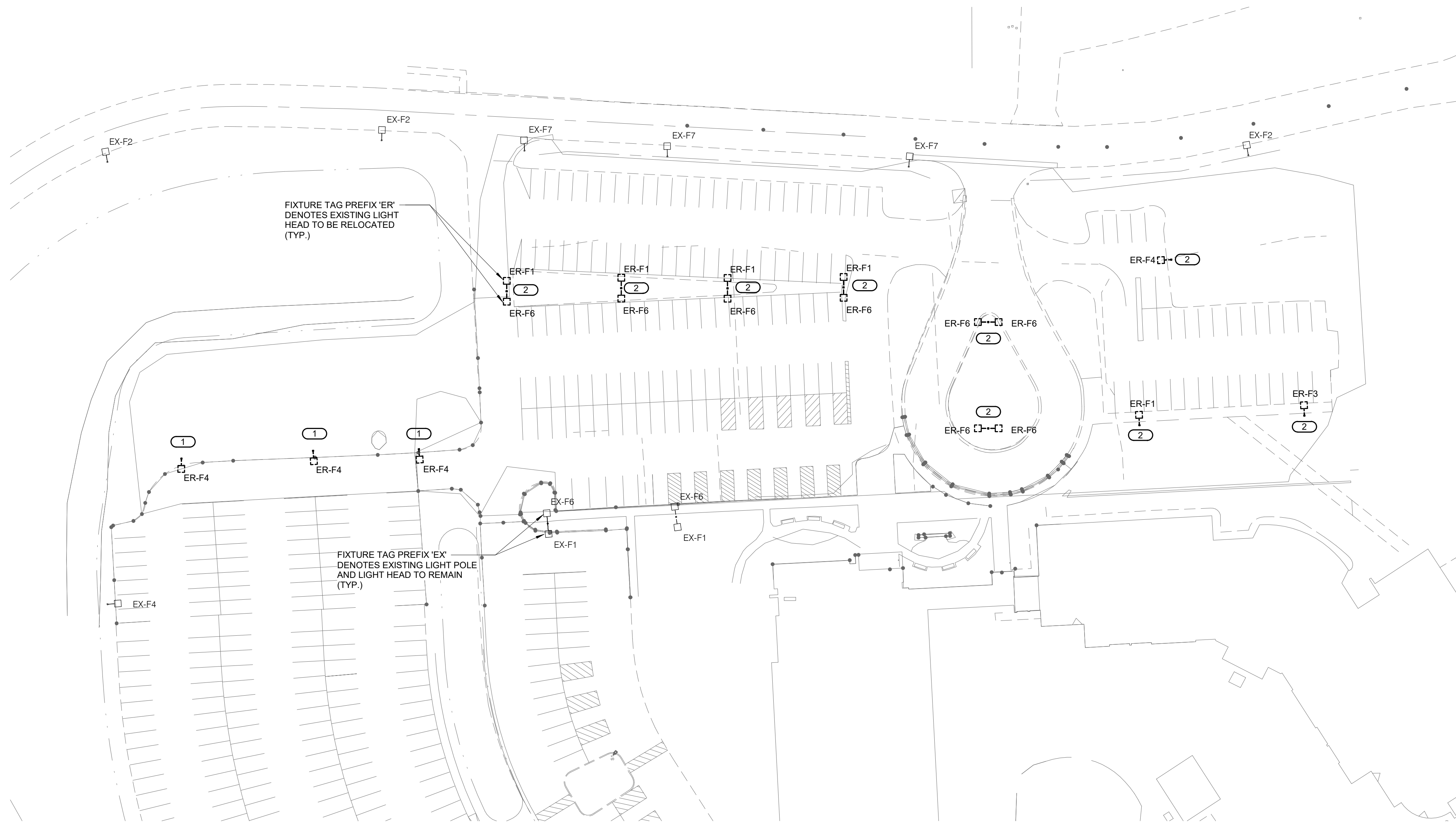
EO

1100 WARRENVILLE RD, SUITE 400W
NAPERVILLE, IL 60563
630.527.2320 FAX: 630.527.2321
www.imegcorp.com
PROJECT # 18003980.00
Illinois Design Firm Registration #184007657-0014

IMEG CORP RESERVES PROPRIETARY RIGHTS, INCLUDING COPYRIGHTS. TO THIS DRAWING AND THE DATA SHOWN THEREON. SAID DRAWING AND/OR DATA ARE THE EXCLUSIVE PROPERTY OF IMEG CORP AND SHALL NOT BE USED OR REPRODUCED FOR ANY OTHER PROJECT WITHOUT THE EXPRESS WRITTEN APPROVAL AND PARTICIPATION OF IMEG CORP.

© 2018 IMEG CORP.

REFERENCE SCALE IN INCHES
0 1 2 3




 **1** **SITE PLAN - ELECTRICAL DEMOLITION**
1" = 40'-0"

GENERAL SHEET NOTES :

1. REFER TO SHEET E0 FOR ELECTRICAL RENOVATION NOTES, ELECTRICAL INSTALLATION NOTES, ELECTRICAL SYMBOL LIST AND OTHER MISCELLANEOUS INFORMATION.
2. EXISTING REMOVED POLES AND LIGHT HEADS WHICH ARE NOT RE-USED TO BE TURNED OVER TO THE OWNER.

KEYNOTES: (#)

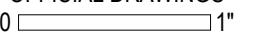
1. REMOVE EXISTING POLE AND ASSOCIATED LIGHT HEAD FOR RELOCATION. REMOVE EXISTING CONCRETE BASE. EXISTING WIRING TO BE REMOVED TO THE LAST ACTIVE POLE AND CONDUITS TO BE ABANDONED. REFER TO SHEET E2 FOR NEW POLE LOCATION.
2. REMOVE EXISTING POLE AND EXISTING CONCRETE BASE. EXISTING LIGHT HEAD TO BE REMOVED FOR RELOCATION. EXISTING WIRING TO BE REMOVED TO THE LAST ACTIVE POLE AND CONDUITS TO BE ABANDONED. THESE POLES SHALL NOT BE REUSED. TURN OVER TO THE OWNER.




1100 WARRENVILLE RD, SUITE 400W
NAPERVILLE, IL 60563
630.527.2320 FAX: 630.527.2321
www.imegcorp.com
PROJECT # 18003980.00
Illinois Design Firm Registration #184007637-0014

IMEG CORP RESERVES PROPRIETARY RIGHTS, INCLUDING COPYRIGHTS. TO THIS DRAWING AND THE DATA SHOWN THEREON. SAID DRAWING AND/OR DATA ARE THE EXCLUSIVE PROPERTY OF IMEG CORP AND SHALL NOT BE USED OR REPRODUCED FOR ANY OTHER PROJECT WITHOUT THE EXPRESS WRITTEN APPROVAL AND PARTICIPATION OF IMEG CORP. © 2018 IMEG CORP.

REFERENCE SCALE IN INCHES
0 1 2 3

DRAWN BY:	TB	JOB DATE:	11/09/2018	BAR IS ONE INCH ON OFFICIAL DRAWINGS
APPROVED:	JML	JOB NO:	180186	0  1"
CAD DATE:				IF NOT ONE INCH, ADJUST SCALE ACCORDINGLY
CAD FILE:				

NO.	DATE	BY	REVISION DESCRIPTION
1	11/09/18	TB	FOR PERMIT / BID



ILLINOIS DESIGN FIRM # 184.001322
420 N. FRONT STREET, SUITE 100
McHENRY, ILLINOIS 60050
PHONE: 815.385.1778 | TOLL FREE: 800.728.7805
FAX: 815.385.1781 | HRGreen.com



McHENRY COUNTY COLLEGE
PARKING LOT E & F IMPROVEMENTS
CRYSTAL LAKE, ILLINOIS

SITE PLAN - ELECTRICAL DEMOLITION

SHEET NO.
E1

IN ADDITION TO THE HEADS SCHEDULED FOR REUSE AS SHOWN ON DEMOLITION SHEET, EC TO REUSE EXISTING (9) STRAIGHT 6"x6" X 30-FOOT LIGHT POLES AND (3) ER-S2 AND (3) ER-S3 LIGHT HEADS. THESE ARE CURRENTLY STORED OUTSIDE THE GARAGE BUILDING, SOUTH OF THE PARKING LOT F.

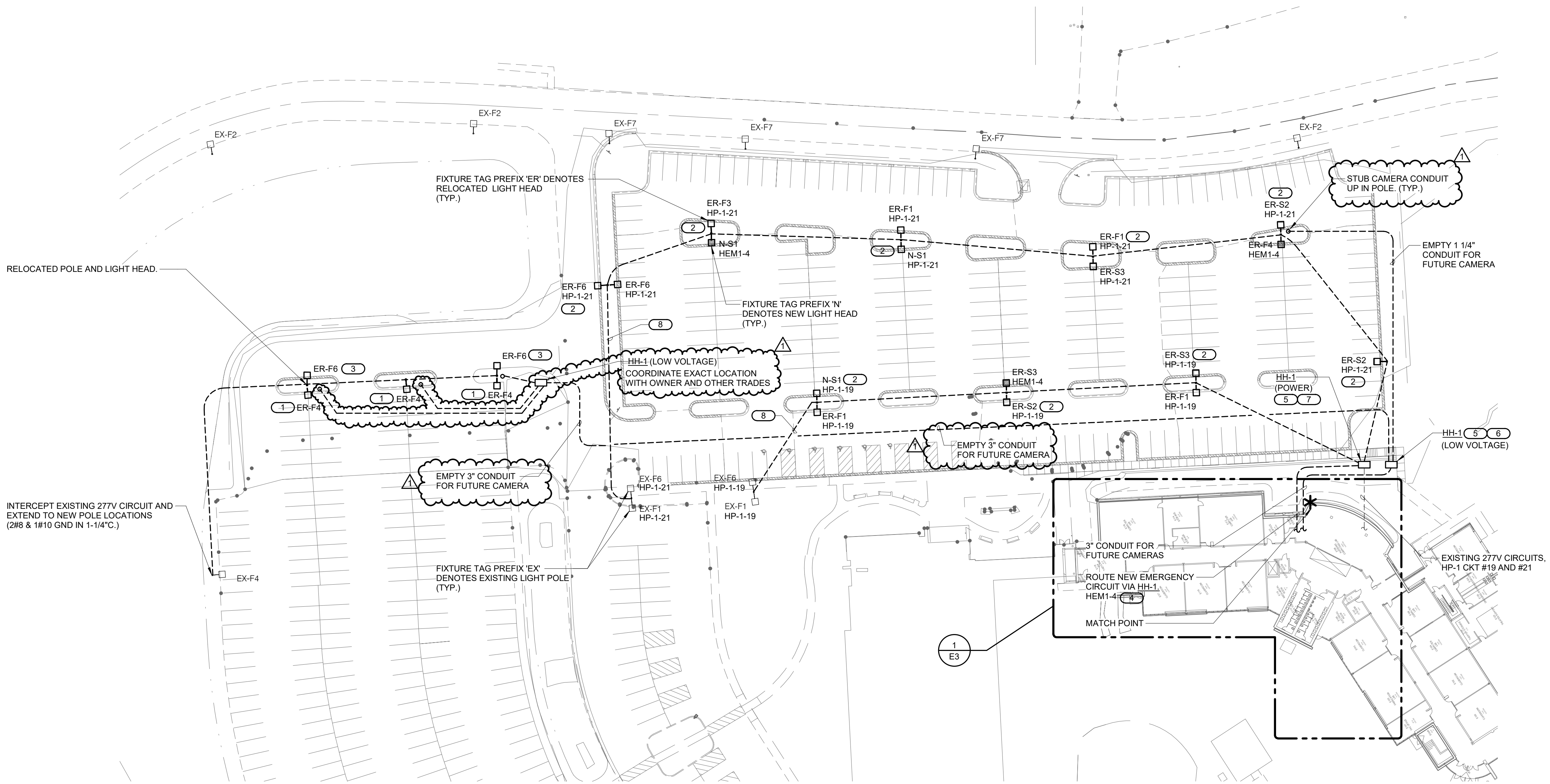
EC SHALL UNBOLT EXISTING HEADS FROM POLES AND BOLT EXISTING/NEW HEADS AS SHOWN. PROVIDE ALL NECESSARY HARDWARE FOR BOLTING HEADS TO THE EXISTING POLES. PROVIDE NEW TOP END COVERS, NEW HANDHOLE COVERS AND NEW BOLT COVERS FOR EXISTING POLES.

ER-S2 GLEON-AF-03-LED-E1-T4W-BZ-700, 105W

ER-S3 GLEON-AF-04-LED-E1-T4W-BZ-700, 138W

- GENERAL SHEET NOTES :**
1. REFER TO SHEET E0 FOR ELECTRICAL RENOVATION NOTES, ELECTRICAL INSTALLATION NOTES, ELECTRICAL SYMBOL LIST AND OTHER MISCELLANEOUS INFORMATION.
 2. INSTALL CONDUIT MINIMUM 30" BELOW GRADE. REFER TO 26 05 33 FOR ADDITIONAL REQUIREMENTS.

- KEYNOTES: #**
1. RELOCATED POLE AND HEAD. RE-CONNECT LIGHT HEAD TO EXISTING CIRCUIT. PROVIDE CONCRETE BASE, REFER TO 1/E4 FOR EXTENDED POLE BASE DETAIL.
 2. INSTALL EXISTING POLE AND CONCRETE BASE. REFER TO 1/E4 FOR EXTENDED POLE BASE DETAIL. BOLT HEADS TO THE POLE AS SHOWN.
 3. INSTALL ADDITIONAL EXISTING LIGHT HEAD TO RELOCATED POLE. PROVIDE ALL REQUIRED HARDWARE FOR COMPLETE AND FUNCTIONAL INSTALLATION.
 4. ROUTE CONDUIT AND WIRING (2#8 & 1#10 GND IN 1-1/4" C.) TO EXISTING EMERGENCY PANEL 'HEM1'. VIA LC-1 CONNECT TO EXISTING SPARE 20A/1P, 277V CIRCUIT BREAKER. (CKT#4)
 5. COORDINATE EXACT LOCATION WITH OWNER AND OTHER TRADES. MAINTAINING A MINIMUM OF 5'-0" DISTANCE FROM PERIMETER OF BUILDING FOUNDATION.
 6. ROUTE 3" EMPTY CONDUIT FROM HANDHOLE FOR FUTURE CAMERAS TO IT/COMM ROOM E107.
 7. INTERCEPT TWO EXISTING 277V CIRCUIT IN NEW HAND HOLE AND EXTEND TO NEW POLE LOCATIONS. USE MINIMUM (2#8 AND 1#10 GND IN 1-1/4" C.)
 8. RE-FEED EXISTING POLES WITH NEW CIRCUIT.



SITE PLAN - ELECTRICAL

1" = 40'-0"

IMEG
1100 WARRENVILLE RD, SUITE 400W
NAPERVILLE, IL 60563
630.527.2320 FAX: 630.527.2321
www.imegcorp.com
PROJECT # 18003980.00
Illinois Design Firm Registration #184007637-0014

IMEG CORP RESERVES PROPRIETARY RIGHTS, INCLUDING COPYRIGHTS. TO THIS DRAWING AND THE DATA SHOWN THEREON. SAID DRAWING AND/OR DATA ARE THE EXCLUSIVE PROPERTY OF IMEG CORP AND SHALL NOT BE USED OR REPRODUCED FOR ANY OTHER PROJECT WITHOUT THE EXPRESS WRITTEN APPROVAL AND PARTICIPATION OF IMEG CORP.

REFERENCE SCALE IN INCHES
0 1 2 3

DRAWN BY: TB JOB DATE: 11/09/2018
APPROVED: JML JOB NO: 180186
CAD DATE:
CAD FILE:
BAR IS ONE INCH ON OFFICIAL DRAWINGS
0 1" IF NOT ONE INCH, ADJUST SCALE ACCORDINGLY

NO.	DATE	BY	REVISION DESCRIPTION
	11/09/18	TB	FOR PERMIT / BID
1.	11/20/18	TB	ADDENDUM 1



ILLINOIS DESIGN FIRM # 184.001322
420 N. FRONT STREET, SUITE 100
McHENRY, ILLINOIS 60050
PHONE: 815.385.1778 | TOLL FREE: 800.728.7805
FAX: 815.385.1781 | HRGreen.com



McHENRY COUNTY COLLEGE
PARKING LOT E & F IMPROVEMENTS
CRYSTAL LAKE, ILLINOIS

SITE PLAN - ELECTRICAL

SHEET NO.

E2

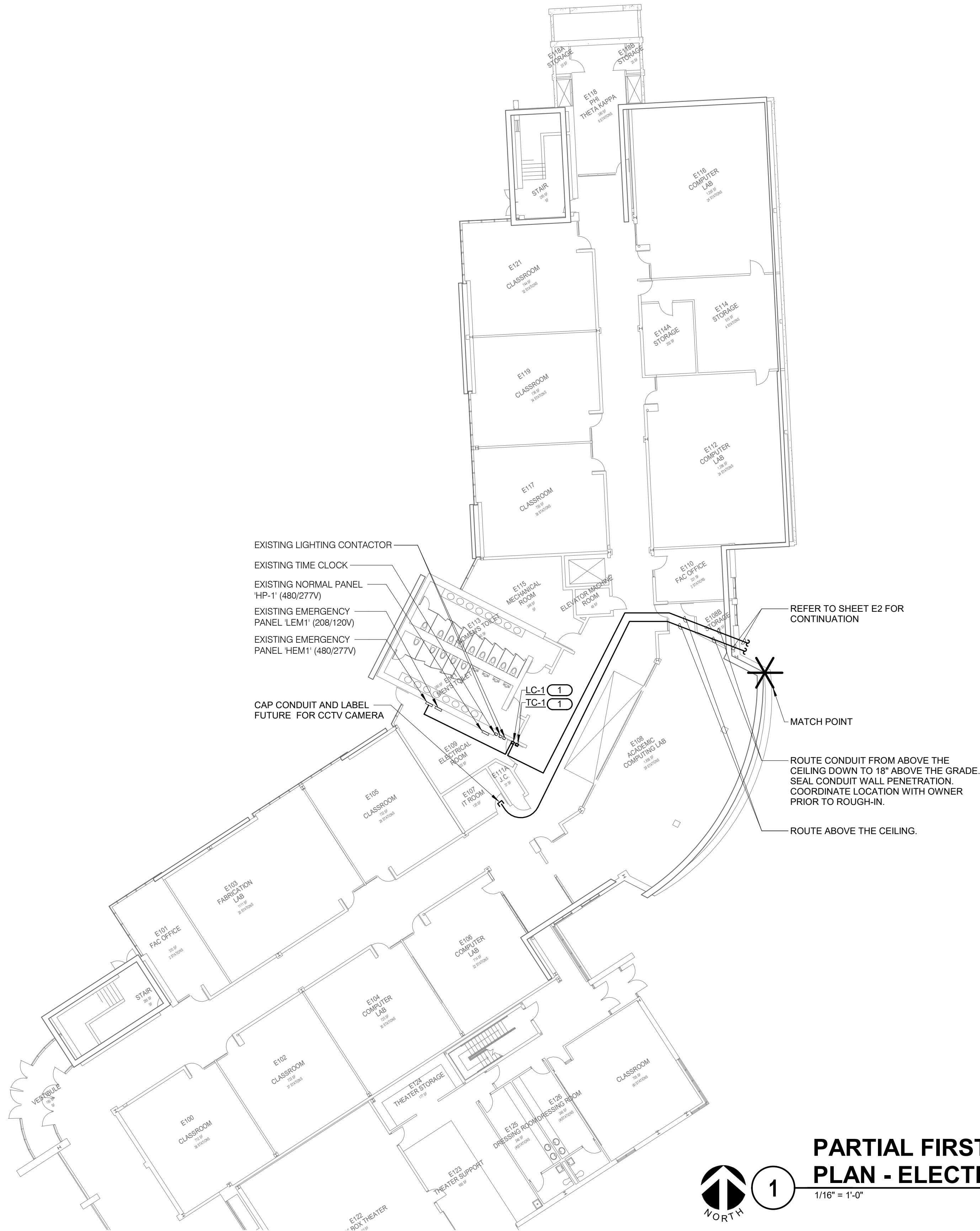
- GENERAL SHEET NOTES :
1.

REFER TO SHEET E0 FOR ELECTRICAL RENOVATION NOTES, ELECTRICAL INSTALLATION NOTES, ELECTRICAL SYMBOL LIST AND OTHER MISCELLANEOUS INFORMATION.

KEYNOTES: #

1.

ROUTE CONDUIT AND WIRING (2#12 & 1#12 GND IN 3/4" C.) TO EXISTING PANEL "LEM1". PROVIDE NEW 20A/1P, 120V CIRCUIT BREAKER AND MAKE FINAL CONNECTION. MATCH EXISTING CIRCUIT BREAKER TYPE AND RATING. REFER TO 2/E5 FOR EMERGENCY SITE LIGHTING CONTROL DIAGRAMS.



1

1/16" = 1'-0"

PARTIAL FIRST FLOOR
PLAN - ELECTRICAL

IMEG

1100 WARRENVILLE RD, SUITE 400W
NAPERVILLE, IL 60563
630.527.2320 FAX: 630.527.2321
www.imegcorp.com
PROJECT # 18003980.00

Illinois Design Firm Registration #184007637-0014

IMEG CORP RESERVES PROPRIETARY RIGHTS, INCLUDING COPYRIGHTS. TO THIS DRAWING AND THE DATA SHOWN THEREON. SAID DRAWING AND/OR DATA ARE THE EXCLUSIVE PROPERTY OF IMEG CORP AND SHALL NOT BE USED OR REPRODUCED FOR ANY OTHER PROJECT WITHOUT THE EXPRESS WRITTEN APPROVAL AND PARTICIPATION OF IMEG CORP.

© 2018 IMEG CORP.

REFERENCE SCALE IN INCHES

0 1 2 3

DRAWN BY:	TB	JOB DATE:	11/09/2018	BAR IS ONE INCH ON OFFICIAL DRAWINGS
APPROVED:	JML	JOB NO:	180186	0 1"
CAD DATE:				IF NOT ONE INCH, ADJUST SCALE ACCORDINGLY
CAD FILE:				

NO.	DATE	BY	REVISION DESCRIPTION
1	11/09/18	TB	FOR PERMIT / BID

HRGreen

ILLINOIS DESIGN FIRM # 184.001322
420 N. FRONT STREET, SUITE 100
McHENRY, ILLINOIS 60050
PHONE: 815.385.1778 | TOLL FREE: 800.728.7805
FAX: 815.385.1781 | HRGreen.com

McHenry
County College

McHENRY COUNTY COLLEGE
PARKING LOT E & F IMPROVEMENTS
CRYSTAL LAKE, ILLINOIS

PARTIAL FIRST FLOOR PLAN - ELECTRICAL

SHEET NO.
E3



1 SITE PLAN - PHOTOMETRIC
1" = 40'-0"

DRAWN BY: TB
APPROVED: JML
CAD DATE:
CAD FILE:

JOB DATE: 11/09/2018
JOB NO: 180186

BAR IS ONE INCH ON
OFFICIAL DRAWINGS
0" = 1"
IF NOT ONE INCH,
ADJUST SCALE ACCORDINGLY

NO.	DATE	BY	REVISION DESCRIPTION
1	11/09/18	TB	FOR PERMIT / BID



ILLINOIS DESIGN FIRM # 184.001322
420 N. FRONT STREET, SUITE 100
McHENRY, ILLINOIS 60050
PHONE: 815.385.1778 | TOLL FREE: 800.728.7805
FAX: 815.385.1781 | HRGreen.com



McHENRY COUNTY COLLEGE
PARKING LOT E & F IMPROVEMENTS
CRYSTAL LAKE, ILLINOIS

SITE PLAN - PHOTOMETRIC

1100 WARRENVILLE RD, SUITE 400W
NAPERVILLE, IL 60563
630.527.2320 FAX: 630.527.2321
www.imegcorp.com
PROJECT # 18003880.00
Illinois Design Firm Registration #184007637-0014

IMEG CORP RESERVES PROPRIETARY RIGHTS, INCLUDING COPYRIGHTS. TO THIS DRAWING AND THE DATA SHOWN THEREON. SAID DRAWING AND/OR DATA ARE THE EXCLUSIVE PROPERTY OF IMEG CORP AND SHALL NOT BE USED OR REPRODUCED FOR ANY OTHER PROJECT WITHOUT THE EXPRESS WRITTEN APPROVAL AND PARTICIPATION OF IMEG CORP.
© 2018 IMEG CORP.

REFERENCE SCALE IN INCHES
0 1 2 3

SHEET NO.

E4

LUMINAIRE SCHEDULE

(DESC) DOOR:	FA - FLAT ALUMINUM	DISTRIBUTION:	II - ANSI/IES TYPE 2 DISTRIBUTION	BEAMWIDTH:	NSP - VERY NARROW SPOT	(L/L) LENS/LOUVER:	A - .125" ACRYLIC	K19 - KSH19 .156" ACRYLIC	
	FS - FLAT STEEL		III - ANSI/IES TYPE 3 DISTRIBUTION		SP - SPOT		B - BAFFLE/LOUVER		M - MATTE DIFFUSE CLEAR
	RA - REGRESSED ALUMINUM		IV - ANSI/IES TYPE 4 DISTRIBUTION		MD - MEDIUM		C - CLEAR ALZAK		P - POLYCARBONATE
	RS - REGRESSED STEEL		V - ANSI/IES TYPE 5 DISTRIBUTION		WD - WIDE		F - FROSTED ACRYLIC		R - HIGH IMPACT DR ACRYLIC
	FINISH:						VWD - VERY WIDE		G - TEMPERED GLASS
	PAF - PAINT AFTER FABRICATION				WW - WALL WASH		O - OTHER (SEE DESCRIPTION)		
	CFSA - COLOR-FINISH SELECTION BY ARCHITECT						[DESIGN SPECIFIC BLANKS]		
(TYPE) LIGHT SOURCE TECHNOLOGY:	DLED - DYNAMIC TUNABLE LED	FL - FLUORESCENT	CC - COLD CATHODE	(MTG) MOUNTING:	PL - POLE				
	LED - LIGHT EMITTING DIODE	CF - COMPACT FLUORESCENT	IND - INDUCTION	CL - CEILING SURFACE	RE - RECESSED				
	OLED - ORGANIC LED	HL - HALOGEN	O - OTHER (SEE DESC)	CV - COVE	SP - SUSPENDED				
	RGB - COLOR CHANGING LED	HIR - HALOGEN INFRARED		FR - FLANGED RECESSED	SU - SURFACE				
	RGBA - COLOR CHANGING + AMBER LED	IN - INCANDESCENT		O - OTHER (SEE DESCRIPTION)	UC - UNDER CABINET				
	RGBW - COLOR CHANGING + WHITE LED	HS - HIGH PRESSURE SODIUM		P - PERIMETER	WL - WALL				
	RLED - RETROFIT LED	MH - METAL HALIDE		(WATT) PER:	FIX - FIXTURE, FT - FOOT, LAMP				
	TLED - TUBULAR LED LAMP	SMH - SUPER METAL HALIDE		(TYPE) BALLAST/DRIVER:	HL - HIGH/LOW (100%/50%) STEP DIM				
	WLED - WARM DIM LED	PSMH - PULSE START METAL HALIDE		#BF - BALLAST FACTOR	HP - HIGH PERFORMANCE / LBF				
	O - OTHER (SEE DESCRIPTION)	CMH - CERAMIC METAL HALIDE		0-10V - 0-10V DIMMING	LINE - LINE VOLTAGE DIMMING				
		XL - EXTENDED LIFE FLUORESCENT		DALI - DIGITAL ADDRESSABLE	ML - MULTI-LEVEL SWITCHING				
		XLP - EXTENDED LIFE & OUTPUT FLUORESCENT		DMX - DIGITAL MULTIPLEX	MV - MULTI-VOLTAGE ELECTRONIC				
				EB - ELECTRONIC	REM - REMOTE				
				ELV - ELECTRONIC LOW VOLTAGE	O - OTHER (SEE DESCRIPTION)				
				EM - EMERGENCY BATTERY					